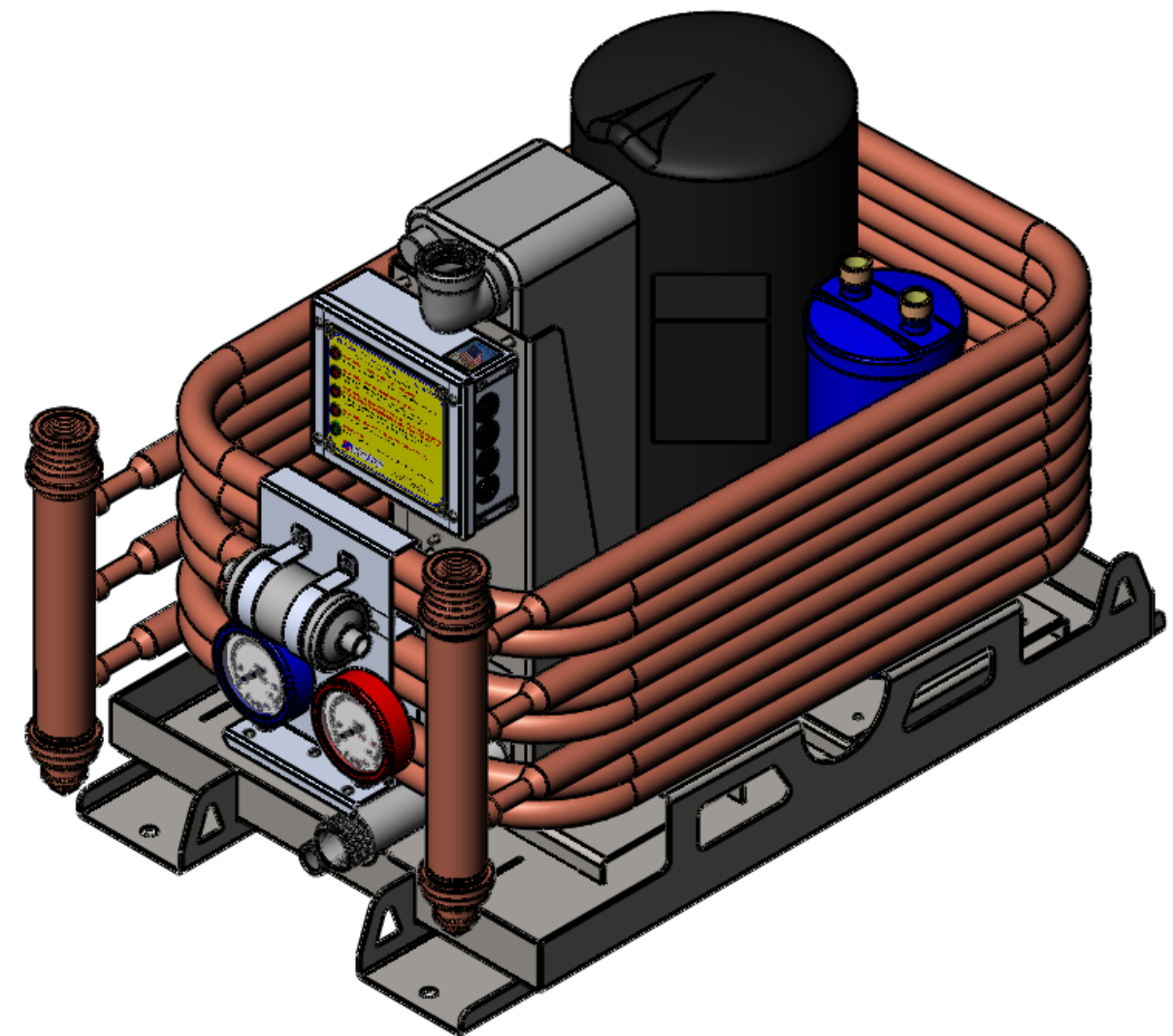


| FLAGSHIP MARINE, INC. |      |                  |           |              |
|-----------------------|------|------------------|-----------|--------------|
| REV.                  | ZONE | DESCRIPTION      | DATE      | ENG APPROVAL |
| 01                    | -    | INITIAL CHECK-IN | 7/20/2011 | -            |



| ITEM NO. | PART NUMBER    | DESCRIPTION  | 20065-001/QTY. |
|----------|----------------|--|----------------|
| 30       | ZR81KC-TF-5950 | COMPRESSOR, 3PH, 60 Hz, 200-230V   | 1              |
| 29       | V10-414080-170 | REVERSING VALVE LESS COIL, V10-414080-170, RANCO                           | 1              |
| 28       | LLD165S        | FILTER DRIER, LIQUID LINE, TYPE LLD165S, SUPCO                             | 1              |
| 27       | FM60206        | EVAPORATOR, CHILLED WATER, FM96CW & FM120CW                                | 1              |
| 26       | 8NWLOS         | 8-32 LOCK WASHER SS  | 4              |
| 25       | 8CNMES         | 8-32 MACHINE SCREW NUT SS  | 4              |
| 24       | 80279-001      | WELDMENT, MANIFOLD, 1 1/2" PIPE X 11.50"L, FM96CW                          | 2              |
| 23       | 80265-001      | WELDMENT, BASE, CHILLER, FM96CW & FM120CW                                  | 1              |
| 22       | 72396          | #8-32 x 3/8" PHMS 18-8 SS  | 10             |
| 21       | 70666-001      | FABRICATION, STRAP, FILTER DRIER, CHILLER, FM96CW & FM120CW                | 2              |
| 20       | 70664-001      | FABRICATION, PANEL, LIQUID GAUGE & FILTER DRIER, CHILLER, FM96CW & FM120CW | 1              |
| 19       | 70656-001      | FABRICATION, BRACKET, LIQUID GAUGE & FILTER DRYER, CHILLER, FM60CW         | 1              |
| 18       | 70654-001      | FABRICATION, BRACKET, EVAPORATOR, CHILLER, FM60CW                          | 1              |
| 17       | 60071-001      | STANDOFF, .385 ID X 1.406 OD X 1.00 THK, 70 DURO EPDM BLACK                | 4              |
| 16       | 60070-001      | WASHER, .385 ID X 1.406 OD X .25 THK, 60 DURO EPDM BLACK                   | 4              |
| 15       | 60053-001      | SUCTION ACCUMULATOR, CHILLED WATER, FM96CW & FM120CW                       | 1              |
| 14       | 60045-002      | PRESSURE GAUGE, LOW SIDE, BLUE, YELLOW JACKET 49002                        | 1              |
| 13       | 60045-001      | PRESSURE GAUGE, HIGH SIDE, RED, YELLOW JACKET49001                         | 1              |
| 12       | 50008-001      | FABRICATION, TUBING, CHILLER, FM120CW                                      | 3              |
| 11       | 4830K248       | 1 1/4" NPT NIPPLE, 6"L, 304 SS   | 1              |
| 10       | 4464K66        | 1 1/4" NPT COUPLING, 304 SS  | 1              |
| 9        | 4464K17        | 1 1/4" NPT 90 DEG ELBOW, 304 SS  | 1              |
| 8        | 4429K746       | REDUCING COUPLING, 1 1/4" NPT - 3/4" NPT, CAST BRASS                       | 2              |
| 7        | 4429K745       | REDUCING COUPLING, 1 1/2" NPT - 1 1/4" NPT, CAST BRASS                     | 2              |
| 6        | 4429K315       | PLUG, 3/4" NPT, CAST BRASS   | 2              |
| 5        | 37NWLOS        | 3/8 LOCK WASHER SS   | 8              |
| 4        | 37N125WFES     | 3/8 X 1-1/4 FENDER WASHER SS   | 4              |
| 3        | 37N125WFES     | 3/8 X 1-1/4 FENDER WASHER SS   | 4              |
| 2        | 37CNFHS        | 3/8 HEX FINISH NUT SS  | 8              |
| 1        | 20014-001      | ASSEMBLY, ENCLOSURE, LOW VOLTAGE, CHILLERS                                 | 1              |

2. PREFERRED LIMITS AND FITS PER ANSI B4.1 (INCHES).  
 1. DIMENSIONING & TOLERANCING PER ASME Y14.5M.  
 NOTES:

**Flagship Marine**  
 Components  
 Quality Direct  
 Flagship

**FLAGSHIP MARINE, INC.**  
 2427 SE DIXIE HIGHWAY  
 STUART | FLORIDA | 34996 | USA  
 (772) 283-1609 | (800) 316-6426  
 FAX (772) 283-4611

**PROPRIETARY AND CONFIDENTIAL**  
 THIS DOCUMENT CONTAINS INFORMATION PROPRIETARY TO FLAGSHIP MARINE, INC. NO PART MAY BE REPRODUCED, USED IN ANY FORM, OR STORED ELECTRONICALLY WITHOUT THE WRITTEN PERMISSION OF FLAGSHIP MARINE, INC.

| UNLESS OTHERWISE SPECIFIED:                      |                      | NAME                | DATE         |
|--|----------------------|---------------------|--------------|
| DIMENSIONS ARE IN INCHES                         |                      | DRAWN               | SWC 2/4/2011 |
| TOLERANCES:                                      |                      | CHECKED             | TCM -        |
| FRACTIONS ± 1/32                                 |                      | ENG APPR.           | TCM -        |
| ANG: MACH ± 0°30' BEND ± 2°                      |                      | MFG APPR.           | TCM -        |
| DECIMALS .XX ± .01                               |                      | Q.A.                | EAS -        |
| .XXX ± .005                                      |                      |                     |              |
| HOLE Ø .XX ± .005                                |                      |                     |              |
| INTERPRET GEOMETRIC TOLERANCING PER: ASME Y14.5M |                      |                     |              |
| MATERIAL   |                      | PERP STRAIGHTNESS   | ∓ .003/IN    |
|  |                      | FLATNESS            | ∓ .005/IN    |
|  |                      | THREADS:            |              |
|  |                      | EXTERNAL - CLASS 2A |              |
|  |                      | INTERNAL - CLASS 2B |              |
| FINISH   |                      | MACHINED SURFACES:  | √ U.O.S      |
| NEXT ASSY  | USED ON              |                     |              |
| APPLICATION                                      | DO NOT SCALE DRAWING |                     |              |

**FLAGSHIP MARINE, INC. BILL OF MATERIALS**

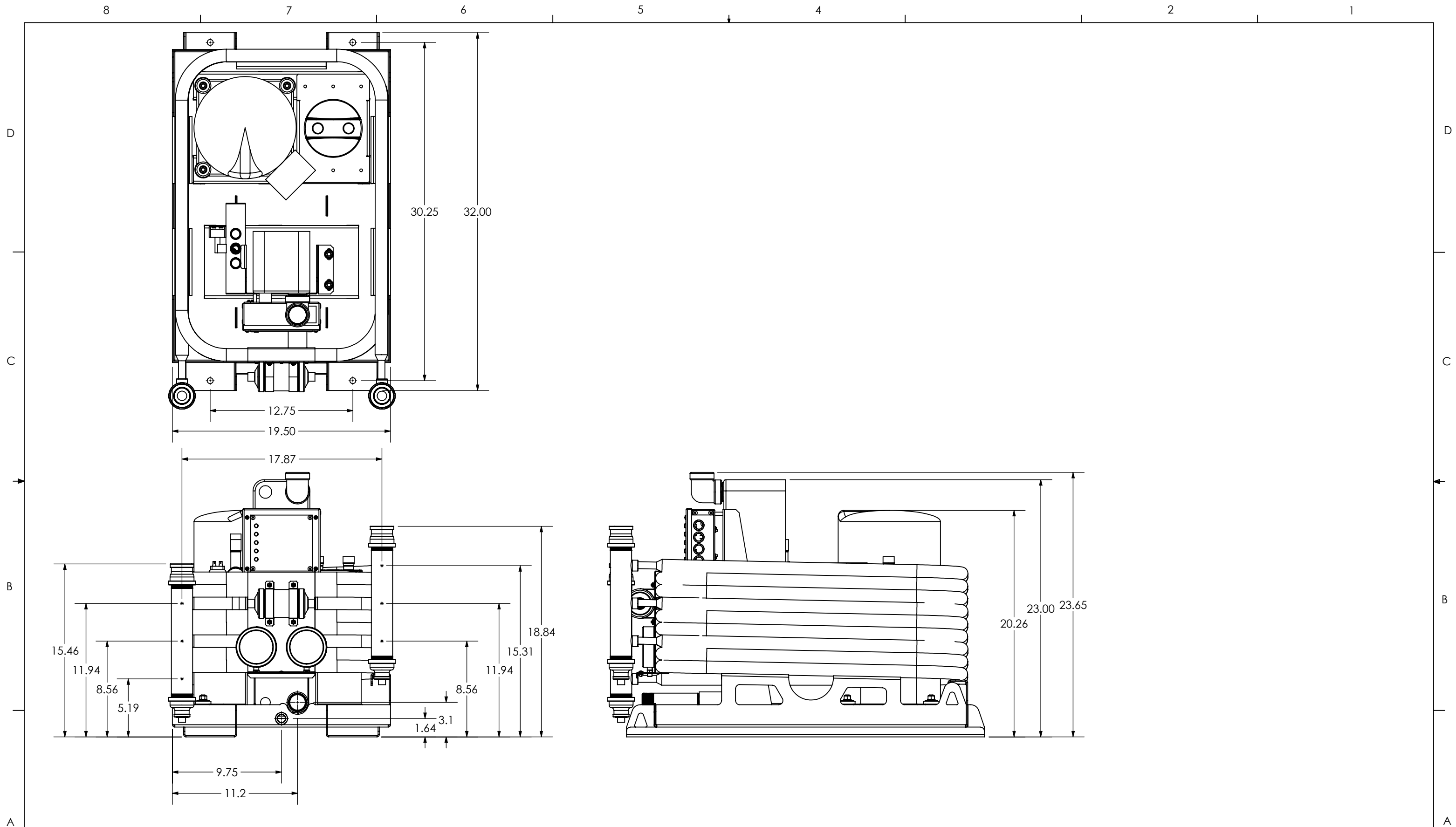
TITLE: ASSEMBLY, CHILLER, FM96CW, 32L X 19.50W X 23H

PART NO. 20065-001

SIZE DWG. NO. REV  
**B** FM20065 **01**

OLD PART NO. -

SCALE: 1:6 WGT: 476.53 LBS SHEET 1 OF 2



**Flagship Marine**  
 Commercial Quality Factory Direct Prices  
 2427 SE DIXIE HIGHWAY | STUART | FLORIDA | 34996 | USA  
 (772) 283-1609 | (800) 316-6426 FAX (772) 283-4611

DRAWN -  
 CHECKED -  
 ENG APPR. -

SIZE B  
 WGT: 476.53 LBS

DRAWING NO. FM20065  
 SCALE: 1:8  
 SHEET 2 OF 2

REV 01