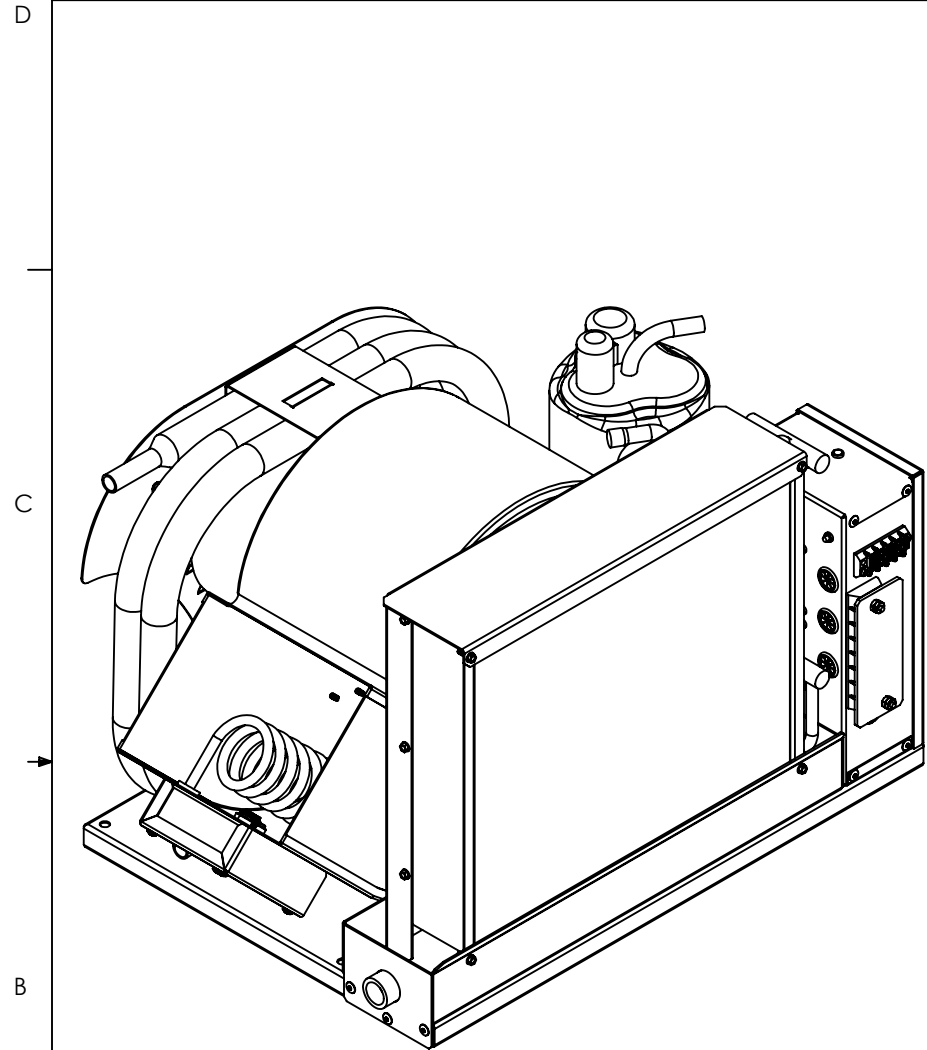


PART NUMBER	DESCRIPTION
20026-001	ASSEMBLY, AIR CONDITIONER FM20R, 21.75L X 15.5W X 15.0H, 120V SIDE
20026-011	ASSEMBLY, AIR CONDITIONER FM20R, 21.75L X 15.5W X 15.0H, 120V SIDE, WITH OPTIONAL HEAT
20026-101	ASSEMBLY, AIR CONDITIONER FM20R, 21.75L X 15.5W X 15.0H, 230V SIDE
20026-111	ASSEMBLY, AIR CONDITIONER FM20R, 21.75L X 15.5W X 15.0H, 230V SIDE, WITH OPTIONAL HEAT

FLAGSHIP MARINE, INC.				
REV.	ZONE	DESCRIPTION	DATE	ENG APPROVAL
01		INITIAL CHECK-IN	12/10/2010	



**20026-011 SHOWN
SEE SHEET 3 OF 4 FOR DIMENSIONS**

26	80100-001	WELDMENT, DRAIN PAN, EVAPORATOR, AIR CONDITIONER, FM18.5R & FM20R, SIDE	1	1	1	1
25	70104-002	FABRICATION, SUPPORT, BASE, AIR CONDITIONER, FM20R	1	1	1	1
24	70103-002	FABRICATION, BRACKET, CONDENSER, AIR CONDITIONER, SIDE, FM20R	1	1	1	1
23	70102-001	FABRICATION, SHROUD, EVAPORATOR, AIR CONDITIONER, FM18.5R & FM20R, SIDE	1	1	1	1
22	70100-002	FABRICATION, BASE, AIR CONDITIONER, FM20R	1	1	1	1
21	70098-001	FABRICATION, BRACKET, BLOWER, AIR CONDITIONER, FM12R, FM16R & FM18R	1	1	1	1
20	70092-001	DETAIL, PLATE, DECORATIVE CONDENSER COVER, FM12R /FM16R / FM18R	1	1	1	1
19	70086-001	FABRICATION, LID, ENCLOSURE, HEATER COIL, AIR CONDITIONER, FM9R	-	1	1	-
18	70085-001	FABRICATION, ENCLOSURE, HEATER COIL, AIR CONDITIONER, FM9R	-	1	1	-
17	60214-001	EVAPORATOR, 18500 MBTU, 12HX14W, 3 ROW	1	1	1	1
16	60131-001	GROMMET, 11/16" PUSH-IN LOCKING, NYLON	-	1	1	-
15	60062-001	THERMAL LIMIT SWITCH, 130 DEGREE	-	1	1	-
14	60060-001	THERMAL LIMIT SWITCH, 110 DEGREE	-	1	1	-
13	60033-001	HEATER ELEMENT, COIL, 48"L, 8MM, 2200W, 120VAC, DBL END THRD BULKHEAD	-	1	-	-
12	60032-002	HEATER ELEMENT, COIL, 45"L, 8MM, 2000W, 240VAC, DBL END THRD BULKHEAD	-	-	1	-
11	60012-001	BLOWER, PSC, FORWARD CURVE, DIRECT DRIVE, WHEEL DIA 8 1/4"	1	1	1	1
10	50005-001	FABRICATION, TUBING, AIR CONDITIONER, FMAC18.5R / FM20R	1	1	1	1
9	2K25S3R236A-7A	COMPRESSOR, 1PH, 60 Hz, 220V	-	-	1	1
8	2K21C126B-SA	COMPRESSOR, 1PH, 60 Hz, 115V	1	1	-	-
7	20015-001	ASSEMBLY, CONTROL BOX, SELF CONTAINED, A/C, UNIVERSAL	1	1	1	1
6	1131943	#8-18 X 1/2" HWH #3 PT SELF DRILLING SCREW, 410 SS	16	20	20	16
5	74113	3/8" DIA. SHOULDER SCREW, HEX HEAD, 1-1/4" L X 5/16"-18 THREAD, 18-8 SS	3	3	3	3
4	72396	#8-32 x 3/8" PHMS 18-8 SS	-	4	4	-
3	71212	1/4" X 1.0" FENDER WASHER, 18-8 SS	3	3	3	3
2	70861	5/16-18 NYLOCK NUT, 18-8 SS	3	3	3	3
1	41424	RIVET 3/16" DIA .062-.125" GRIP RANGE, SSB62S STAINLESS	21	21	21	21

ITEM NO.	PART NUMBER	DESCRIPTION	20026-001/QTY.	20026-011/QTY.	20026-111/QTY.	20026-101/QTY.
----------	-------------	-------------	----------------	----------------	----------------	----------------

FLAGSHIP MARINE, INC. BILL OF MATERIALS

4. NO DEVIATION FROM THIS DESIGN WILL BE ACCEPTED WITHOUT THE PRIOR WRITTEN CONSENT OF FLAGSHIP MARINE, INC. (NINGUNA DESVIACION SE PERMITERA SIN AUTORIZACION ESCRITA PREVIA DE FLAGSHIP MARINE, INC.)
3. NO SHARP EDGES PERMITTED.
2. PREFERRED LIMITS AND FITS PER ANSI B4.1 (INCHES).
1. DIMENSIONING & TOLERANCING PER ASME Y14.5M.
- NOTES:

Flagship Marine
CORPORATION
EST. 1984

FLAGSHIP MARINE, INC.
2427 SE DIXIE HIGHWAY
STUART | FLORIDA | 34996 | USA
(772) 283-1609 | (800) 316-6426
FAX (772) 283-4611

PROPRIETARY AND CONFIDENTIAL

THIS DOCUMENT CONTAINS INFORMATION PROPRIETARY TO FLAGSHIP MARINE, INC. NO PART MAY BE REPRODUCED, USED IN ANY FORM, OR STORED ELECTRONICALLY WITHOUT THE WRITTEN PERMISSION OF FLAGSHIP MARINE, INC.

UNLESS OTHERWISE SPECIFIED:	NAME	DATE
DIMENSIONS ARE IN INCHES	DRAWN	SWC 8/2/2010
TOLERANCES:	CHECKED	TCM -
FRACTIONS ± 1/32	ENG APPR.	TCM -
ANG: MACH ± 0°30' BEND ± 2°	MFG APPR.	TCM -
DECIMALS .XX ± .01	Q.A.	EAS -
.XXX ± .005	PERP STRAIGHTNESS	∟ .003/IN
HOLE Ø .XX ± .005	FLATNESS	≡ .005/IN
INTERPRET GEOMETRIC TOLERANCING PER: ASME Y14.5M	THREADS:	EXTERNAL - CLASS 2A
MATERIAL	INTERNAL - CLASS 2B	63/ U.O.S
FINISH	MACHINED SURFACES:	✓ U.O.S
NONE		
APPLICATION	DO NOT SCALE DRAWING	

TITLE: ASSEMBLY, AIR CONDITIONER FM20R, 21.75L X 15.5W X 15.0H, SIDE

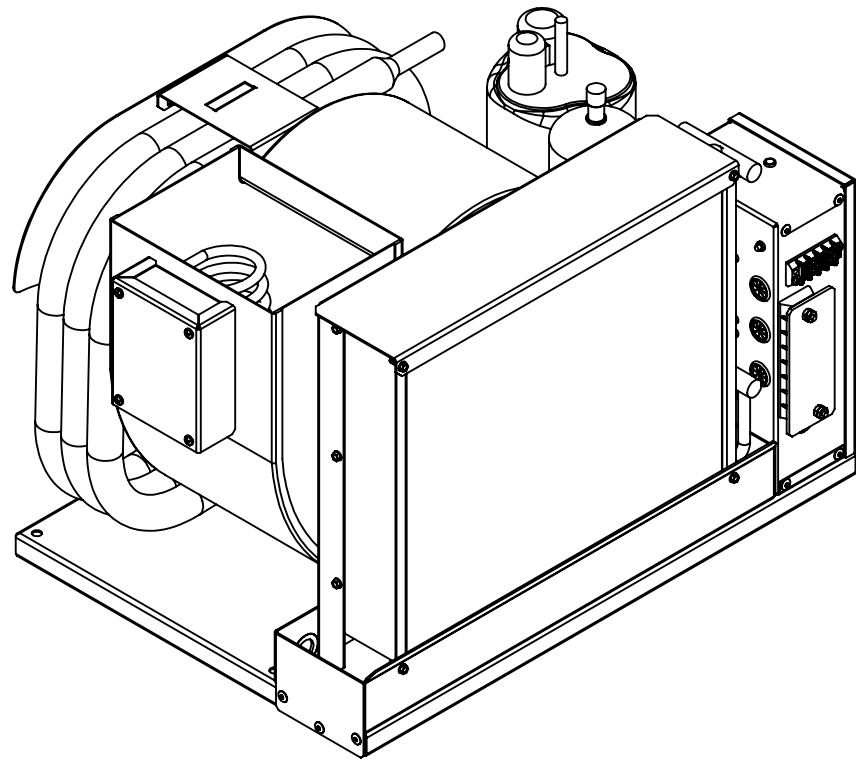
PART NO. 20026-XX1

SIZE DWG. NO. REV
B FM20026 **01**

OLD PART NO. -

SCALE: 1:6 WGT: 141.87 LBS SHEET 1 OF 4

PART NUMBER	DESCRIPTION
20026-002	ASSEMBLY, AIR CONDITIONER FM20R, 21.75L X 15.5W X 15.0H, 120V TOP
20026-012	ASSEMBLY, AIR CONDITIONER FM20R, 21.75L X 15.5W X 15.0H, 120V TOP, WITH OPTIONAL HEAT
20026-102	ASSEMBLY, AIR CONDITIONER FM20R, 21.75L X 15.5W X 15.0H, 230V TOP
20026-112	ASSEMBLY, AIR CONDITIONER FM20R, 21.75L X 15.5W X 15.0H, 230V TOP, WITH OPTIONAL HEAT



**20026-012 SHOWN
SEE SHEET 4 OF 4 FOR DIMENSIONS**

26	70103-012	FABRICATION, BRACKET, CONDENSER, AIR CONDITIONER, TOP, FM20R	1	1	1	1
25	80100-002	WELDMENT, DRAIN PAN, EVAPORATOR, AIR CONDITIONER, FM18.5R & FM20R, TOP	1	1	1	1
24	70104-002	FABRICATION, SUPPORT, BASE, AIR CONDITIONER, FM20R	1	1	1	1
23	70102-002	FABRICATION, SHROUD, EVAPORATOR, AIR CONDITIONER, FM18.5R & FM20R, TOP	1	1	1	1
22	70100-002	FABRICATION, BASE, AIR CONDITIONER, FM20R	1	1	1	1
21	70098-001	FABRICATION, BRACKET, BLOWER, AIR CONDITIONER, FM12R, FM16R & FM18R	1	1	1	1
20	70092-001	DETAIL, PLATE, DECORATIVE CONDENSER COVER, FM12R /FM16R / FM18R	1	1	1	1
19	70086-001	FABRICATION, LID, ENCLOSURE, HEATER COIL, AIR CONDITIONER, FM9R	1	-	-	1
18	70085-001	FABRICATION, ENCLOSURE, HEATER COIL, AIR CONDITIONER, FM9R	1	-	-	1
17	60214-001	EVAPORATOR, 18500 MBTU, 12HX14W, 3 ROW	1	1	1	1
16	60131-001	GROMMET, 11/16" PUSH-IN LOCKING, NYLON	1	-	-	1
15	60062-001	THERMAL LIMIT SWITCH, 130 DEGREE	1	-	-	1
14	60060-001	THERMAL LIMIT SWITCH, 110 DEGREE	1	-	-	1
13	60033-001	HEATER ELEMENT, COIL, 48"L, 8MM, 2200W, 120VAC, DBL END THRD BULKHEAD	1	-	-	-
12	60032-002	HEATER ELEMENT, COIL, 45"L, 8MM, 2000W, 240VAC, DBL END THRD BULKHEAD	-	-	-	1
11	60012-001	BLOWER, PSC, FORWARD CURVE, DIRECT DRIVE, WHEEL DIA 8 1/4"	1	1	1	1
10	50005-001	FABRICATION, TUBING, AIR CONDITIONER, FMAC18.5R / FM20R	1	1	1	1
9	2K25S3R236A-7A	COMPRESSOR, 1PH, 60 Hz, 220V	-	-	1	1
8	2K21C126B-SA	COMPRESSOR, 1PH, 60 Hz, 115V	1	1	-	-
7	20015-001	ASSEMBLY, CONTROL BOX, SELF CONTAINED, A/C, UNIVERSAL	1	1	1	1
6	1131943	#8-18 X 1/2" HWH #3 PT SELF DRILLING SCREW, 410 SS	20	16	16	20
5	74113	3/8" DIA. SHOULDER SCREW, HEX HEAD, 1-1/4" L X 5/16"-18 THREAD, 18-8 SS	3	3	3	3
4	72396	#8-32 x 3/8" PHMS 18-8 SS	4	-	-	4
3	71212	1/4" X 1.0" FENDER WASHER, 18-8 SS	3	3	3	3
2	70861	5/16-18 NYLOCK NUT, 18-8 SS	3	3	3	3
1	41424	RIVET 3/16" DIA .062-.125" GRIP RANGE, SSB62S STAINLESS	21	21	21	21

ITEM NO.	PART NUMBER	DESCRIPTION	20026-012/QTY.	20026-002/QTY.	20026-102/QTY.	20026-112/QTY.
----------	-------------	-------------	----------------	----------------	----------------	----------------

FLAGSHIP MARINE, INC. BILL OF MATERIALS

4. NO DEVIATION FROM THIS DESIGN WILL BE ACCEPTED WITHOUT THE PRIOR WRITTEN CONSENT OF FLAGSHIP MARINE, INC. (NINGUNA DESVIACION SE PERMITERA SIN AUTORIZACION ESCRITA PREVIA DE FLAGSHIP MARINE, INC.)

3. NO SHARP EDGES PERMITTED.

2. PREFERRED LIMITS AND FITS PER ANSI B4.1 (INCHES).

1. DIMENSIONING & TOLERANCING PER ASME Y14.5M.

NOTES:

Flagship Marine
CORPORATION
EST. 1982

FLAGSHIP MARINE, INC.
2427 SE DIXIE HIGHWAY
STUART | FLORIDA | 34996 | USA
(772) 283-1609 | (800) 316-6426
FAX (772) 283-4611

PROPRIETARY AND CONFIDENTIAL

THIS DOCUMENT CONTAINS INFORMATION PROPRIETARY TO FLAGSHIP MARINE, INC. NO PART MAY BE REPRODUCED, USED IN ANY FORM, OR STORED ELECTRONICALLY WITHOUT THE WRITTEN PERMISSION OF FLAGSHIP MARINE, INC.

UNLESS OTHERWISE SPECIFIED:	NAME	DATE
DIMENSIONS ARE IN INCHES	DRAWN	SWC 8/2/2010
TOLERANCES:	CHECKED	TCM -
FRACTIONS ± 1/32	ENG APPR.	TCM -
ANG: MACH ± 0°30' BEND ± 2°	MFG APPR.	TCM -
DECIMALS .XX ± .01	Q.A.	EAS -
.XXX ± .005	PERP STRAIGHTNESS	∟ .003/IN
HOLE Ø .XX ± .005	FLATNESS	≡ .005/IN
INTERPRET GEOMETRIC TOLERANCING PER: ASME Y14.5M	THREADS:	EXTERNAL - CLASS 2A
MATERIAL	INTERNAL - CLASS 2B	63/ U.O.S
FINISH	MACHINED SURFACES:	✓ U.O.S
NONE		
NEXT ASSY		
USED ON		
APPLICATION		
DO NOT SCALE DRAWING		

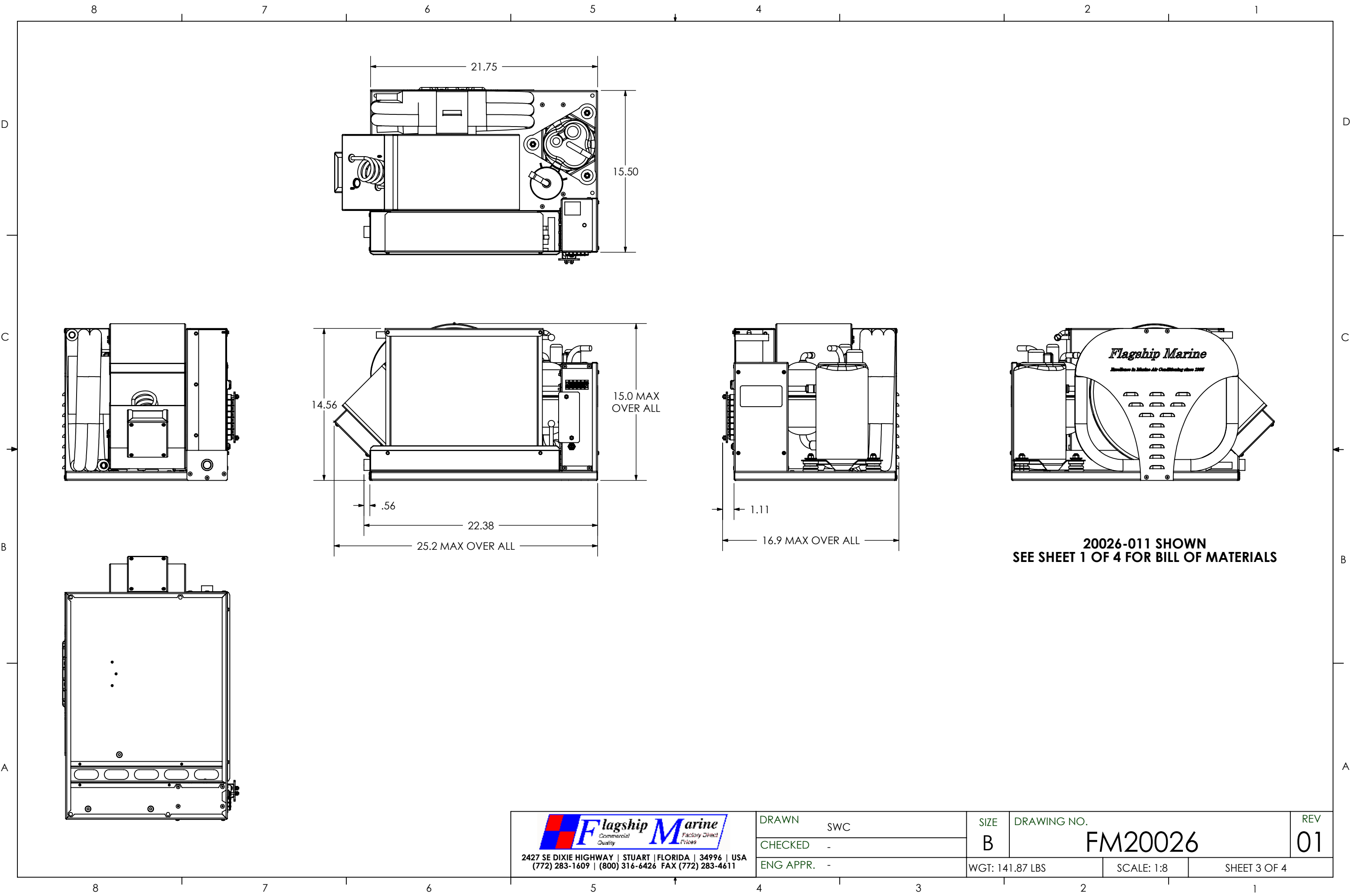
TITLE: ASSEMBLY, AIR CONDITIONER FM20R, 21.75L X 15.5W X 15.0H, TOP

PART NO. **20026-XX2**

SIZE **B** DWG. NO. **FM20026** REV **01**

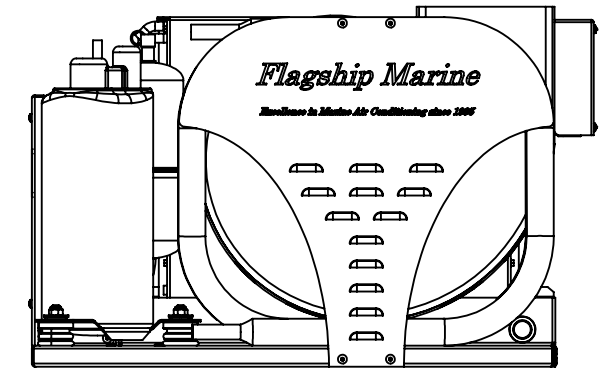
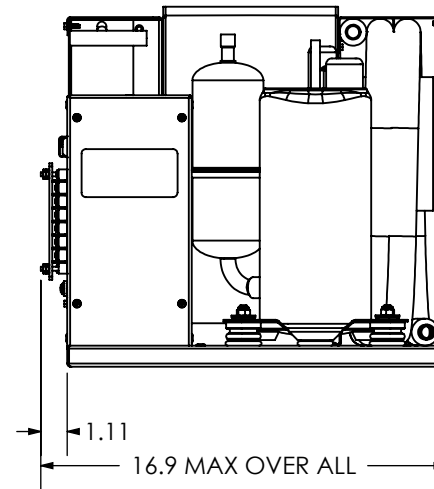
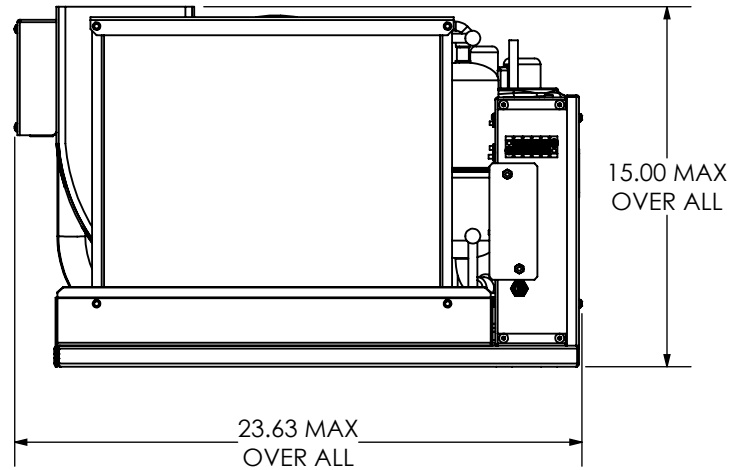
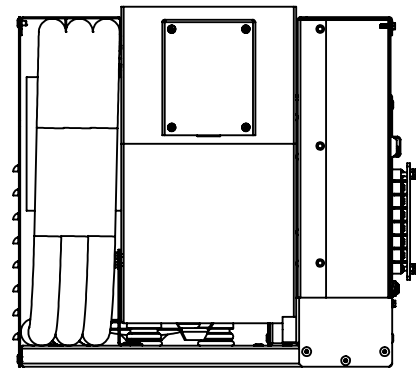
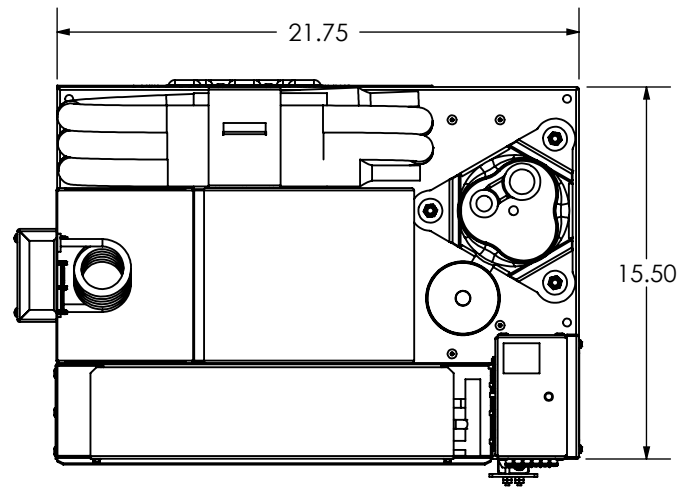
OLD PART NO. -

SCALE: 1:6 WGT: 137.55 LBS SHEET 2 OF 4

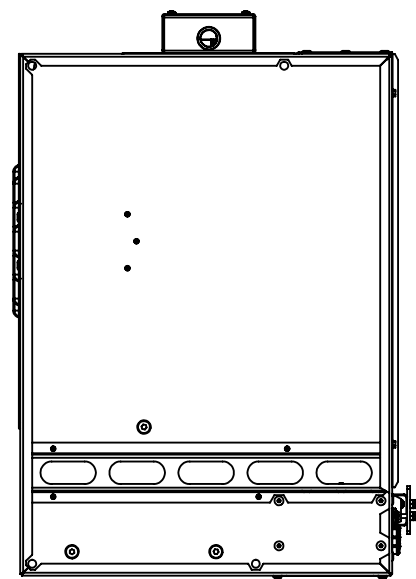


20026-011 SHOWN
SEE SHEET 1 OF 4 FOR BILL OF MATERIALS

 <p>Flagship Marine Commercial Quality Factory Direct Prices</p> <p>2427 SE DIXIE HIGHWAY STUART FLORIDA 34996 USA (772) 283-1609 (800) 316-6426 FAX (772) 283-4611</p>	DRAWN	SWC	SIZE	DRAWING NO.	REV
	CHECKED	-	B	FM20026	01
ENG APPR.	-	WGT: 141.87 LBS	SCALE: 1:8	SHEET 3 OF 4	



**20026-012 SHOWN
 SEE SHEET 2 OF 4 FOR BILL OF MATERIALS**



Flagship Marine
 Commercial Quality Factory Direct Prices

2427 SE DIXIE HIGHWAY | STUART | FLORIDA | 34996 | USA
 (772) 283-1609 | (800) 316-6426 FAX (772) 283-4611

DRAWN	SWC	SIZE	DRAWING NO.	REV
CHECKED	-	B	FM20026	01
ENG APPR.	-	WGT: 137.55 LBS	SCALE: 1:8	SHEET 4 OF 4