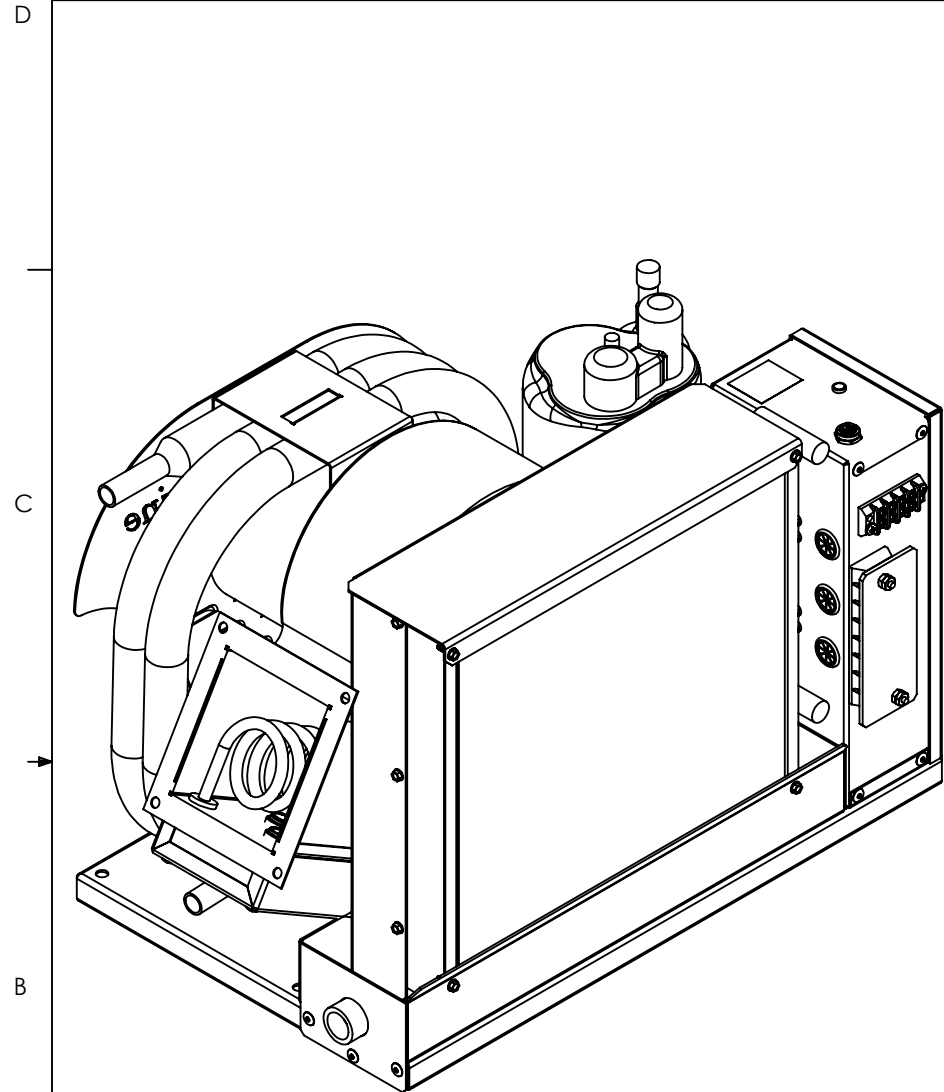


| PART NUMBER | DESCRIPTION  |
|-------------|--|
| 20022-001   | ASSEMBLY, AIR CONDITIONER FM12R, 19.75L X 12.25W X 13.50H, 120V SIDE                     |
| 20022-011   | ASSEMBLY, AIR CONDITIONER FM12R, 19.75L X 12.25W X 13.50H, 120V SIDE, WITH OPTIONAL HEAT |
| 20022-101   | ASSEMBLY, AIR CONDITIONER FM12R, 19.75L X 12.25W X 13.50H, 230V SIDE                     |
| 20022-111   | ASSEMBLY, AIR CONDITIONER FM12R, 19.75L X 12.25W X 13.50H, 230V SIDE, WITH OPTIONAL HEAT |

| FLAGSHIP MARINE, INC. |      |  |           |              |
|-----------------------|------|--|-----------|--------------|
| REV.                  | ZONE | DESCRIPTION                            | DATE      | ENG APPROVAL |
| 01                    |      | INITIAL CHECK-IN                       | 9/24/2010 |              |
| 02                    |      | 20022-001, -011, -101 & -111 WAS 20023 | 11/8/2010 |              |



**20022-011 SHOWN  
SEE SHEET 3 OF 4 FOR DIMENSIONS**

|    |                 |   |    |    |    |    |
|----|-----------------|---|----|----|----|----|
| 29 | ML6360000A20000 | M6 DIN 127 A2 SPLIT LOCK WASHER, 18-8 SS                                | 4  | 4  | 4  | 4  |
| 28 | M82550012A20000 | M6-1.0 X 12MM DIN 933 CLASS A2 CAP SCREW, SS                            | 4  | 4  | 4  | 4  |
| 27 | 80023-001       | WELDMENT, DRAIN PAN, EVAPORATOR, AIR CONDITIONER, FM12R & FM16R, SIDE   | 1  | 1  | 1  | 1  |
| 26 | 70105-001       | FABRICATION, BRACKET, CONDENSER, AIR CONDITIONER, FM12R, SIDE           | 1  | 1  | 1  | 1  |
| 25 | 70099-002       | FABRICATION, SUPPORT, BASE, AIR CONDITIONER, FM12R                      | 1  | 1  | 1  | 1  |
| 24 | 70098-001       | FABRICATION, BRACKET, BLOWER, AIR CONDITIONER, FM12R & FM16R            | 1  | 1  | 1  | 1  |
| 23 | 70097-001       | FABRICATION, SHROUD, EVAPORATOR, AIR CONDITIONER, FM12R, SIDE           | 1  | 1  | 1  | 1  |
| 22 | 70096-001       | FABRICATION, BASE, AIR CONDITIONER, FM12R                               | 1  | 1  | 1  | 1  |
| 21 | 70091-001       | DETAIL, PLATE, DECORATIVE CONDENSER COVER, FM12R /FM16R / FM18R         | 1  | 1  | 1  | 1  |
| 20 | 70086-001       | FABRICATION, LID, ENCLOSURE, HEATER COIL, AIR CONDITIONER, FM9R         | -  | 1  | 1  | -  |
| 19 | 70085-001       | FABRICATION, ENCLOSURE, HEATER COIL, AIR CONDITIONER, FM9R              | -  | 1  | 1  | -  |
| 18 | 60211-001       | EVAPORATOR, 16000 MBTU, 12HX12.13W, 2 ROW                               | 1  | 1  | 1  | 1  |
| 17 | 60131-001       | GROMMET, 11/16" PUSH-IN LOCKING, NYLON                                  | -  | 1  | 1  | -  |
| 16 | 60062-001       | THERMAL LIMIT SWITCH, 130 DEGREE  | -  | 1  | 1  | -  |
| 15 | 60060-001       | THERMAL LIMIT SWITCH, 110 DEGREE  | -  | 1  | 1  | -  |
| 14 | 60031-002       | HEATER ELEMENT, COIL, 45"L, 8MM, 1700W, 240VAC, DBL END THRD BULKHEAD   | -  | -  | 1  | -  |
| 13 | 60031-001       | HEATER ELEMENT, COIL, 45"L, 8MM, 1700W, 120VAC, DBL END THRD BULKHEAD   | -  | 1  | -  | -  |
| 12 | 60021-001       | BLOWER, PSC, SHADED POLE, 1TDR7, 115V                                   | 1  | 1  | -  | -  |
| 11 | 60009-001       | BLOWER, PSC, SHADED POLE, 1TDR8, 230V                                   | -  | -  | 1  | 1  |
| 10 | 50003-001       | FABRICATION, TUBING, AIR CONDITIONER, FM12R / FM16R / FM18R             | 1  | 1  | 1  | 1  |
| 9  | 2P14S3R236A-1A  | COMPRESSOR, 1PH, 60 Hz, 230V  | -  | -  | 1  | 1  |
| 8  | 2P14S3R126B-1A  | COMPRESSOR, 1PH, 60 Hz, 115V  | 1  | 1  | -  | -  |
| 7  | 20015-001       | ASSEMBLY, CONTROL BOX, SELF CONTAINED, A/C, UNIVERSAL                   | 1  | 1  | 1  | 1  |
| 6  | 1131943         | #8-18 X 1/2" HWH #3 PT SELF DRILLING SCREW, 410 SS                      | 16 | 20 | 20 | 16 |
| 5  | 0172789         | 5/16" X 1.13" FENDER WASHER, 18-8 SS                                    | 3  | 3  | 3  | 3  |
| 4  | 74113           | 3/8" DIA. SHOULDER SCREW, HEX HEAD, 1-1/4" L X 5/16"-18 THREAD, 18-8 SS | 3  | 3  | 3  | 3  |
| 3  | 72396           | #8-32 x 3/8" PHMS 18-8 SS   | -  | 4  | 4  | -  |
| 2  | 70861           | 5/16-18 NYLOCK NUT, 18-8 SS   | 3  | 3  | 3  | 3  |
| 1  | 41424           | RIVET 3/16" DIA .062-.125" GRIP RANGE, SSB62S STAINLESS                 | 21 | 21 | 21 | 21 |

| ITEM NO. | PART NUMBER | DESCRIPTION | 20022-001/QTY. | 20022-011/QTY. | 20022-111/QTY. | 20022-101/QTY. |
|----------|-------------|-------------|----------------|----------------|----------------|----------------|
|----------|-------------|-------------|----------------|----------------|----------------|----------------|

**FLAGSHIP MARINE, INC. BILL OF MATERIALS**

4. NO DEVIATION FROM THIS DESIGN WILL BE ACCEPTED WITHOUT THE PRIOR WRITTEN CONSENT OF FLAGSHIP MARINE, INC. (NINGUNA DESVIACION SE PERMITERA SIN AUTORIZACION ESCRITA PREVIA DE FLAGSHIP MARINE, INC.)
3. NO SHARP EDGES PERMITTED.
2. PREFERRED LIMITS AND FITS PER ANSI B4.1 (INCHES).
1. DIMENSIONING & TOLERANCING PER ASME Y14.5M.
- NOTES:

**FLAGSHIP MARINE, INC.**  
2427 SE DIXIE HIGHWAY  
STUART | FLORIDA | 34996 | USA  
(772) 283-1609 | (800) 316-6426  
FAX (772) 283-4611

**PROPRIETARY AND CONFIDENTIAL**

THIS DOCUMENT CONTAINS INFORMATION PROPRIETARY TO FLAGSHIP MARINE, INC. NO PART MAY BE REPRODUCED, USED IN ANY FORM, OR STORED ELECTRONICALLY WITHOUT THE WRITTEN PERMISSION OF FLAGSHIP MARINE, INC.

| UNLESS OTHERWISE SPECIFIED:                      |                      | NAME                | DATE         |
|--|----------------------|---------------------|--------------|
| DIMENSIONS ARE IN INCHES                         |                      | DRAWN               | SWC 8/2/2010 |
| TOLERANCES:                                      |                      | CHECKED             | TCM -        |
| FRACTIONS ± 1/32                                 |                      | ENG APPR.           | TCM -        |
| ANG: MACH ± 0°30' BEND ± 2°                      |                      | MFG APPR.           | TCM -        |
| DECIMALS .XX ± .01                               |                      | Q.A.                | EAS -        |
| .XXX ± .005                                      |                      |                     |              |
| HOLE Ø .XX ± .005                                |                      |                     |              |
| INTERPRET GEOMETRIC TOLERANCING PER: ASME Y14.5M |                      |                     |              |
| MATERIAL   |                      | PERP                | ∟ .003/IN    |
|  |                      | STRAIGHTNESS        | ≡ .005/IN    |
|  |                      | FLATNESS            | ≡ .005/IN    |
| FINISH   |                      | THREADS:            |              |
|  |                      | EXTERNAL - CLASS 2A |              |
|  |                      | INTERNAL - CLASS 2B |              |
|  |                      | MACHINED SURFACES:  | √ U.O.S      |
| NEXT ASSY  | USED ON              |                     |              |
| APPLICATION                                      | DO NOT SCALE DRAWING |                     |              |

TITLE: **ASSEMBLY, AIR CONDITIONER FM12R, 19.75L X 12.25W X 13.50H, SIDE**

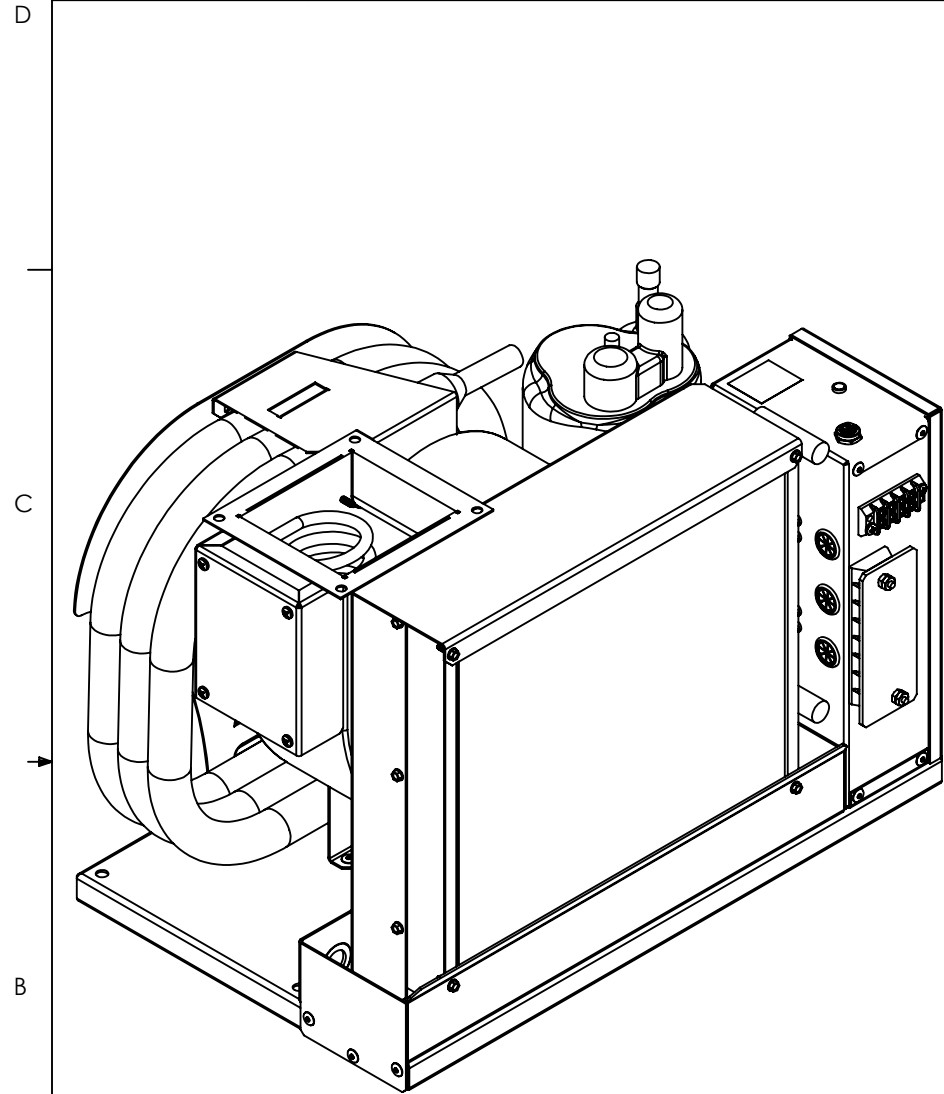
PART NO. **20022-XX1**

SIZE **B** DWG. NO. **FM20022** REV **02**

OLD PART NO. -

SCALE: 1:5 WGT: 102.33 LBS SHEET 1 OF 4

| PART NUMBER | DESCRIPTION   |
|-------------|---|
| 20022-002   | ASSEMBLY, AIR CONDITIONER FM12R, 19.75L X 12.25W X 13.50H, 120V TOP                     |
| 20022-012   | ASSEMBLY, AIR CONDITIONER FM12R, 19.75L X 12.25W X 13.50H, 120V TOP, WITH OPTIONAL HEAT |
| 20022-102   | ASSEMBLY, AIR CONDITIONER FM12R, 19.75L X 12.25W X 13.50H, 230V TOP                     |
| 20022-112   | ASSEMBLY, AIR CONDITIONER FM12R, 19.75L X 12.25W X 13.50H, 230V TOP, WITH OPTIONAL HEAT |



**20022-012 SHOWN  
SEE SHEET 4 OF 4 FOR DIMENSIONS**

|    |                 |   |    |    |    |    |
|----|-----------------|---|----|----|----|----|
| 29 | 60021-001       | BLOWER, PSC, SHADED POLE, 1TDR7, 115V                                   | 1  | 1  | -  | -  |
| 28 | ML6360000A20000 | M6 DIN 127 A2 SPLIT LOCK WASHER, 18-8 SS                                | 4  | 4  | 4  | 4  |
| 27 | M82550012A20000 | M6-1.0 X 12MM DIN 933 CLASS A2 CAP SCREW, SS                            | 4  | 4  | 4  | 4  |
| 26 | 80023-002       | WELDMENT, DRAIN PAN, EVAPORATOR, AIR CONDITIONER, FM12R & FM16R, TOP    | 1  | 1  | 1  | 1  |
| 25 | 70106-001       | FABRICATION, BRACKET, CONDENSER, AIR CONDITIONER, FM12R, TOP            | 1  | 1  | 1  | 1  |
| 24 | 70099-002       | FABRICATION, SUPPORT, BASE, AIR CONDITIONER, FM12R                      | 1  | 1  | 1  | 1  |
| 23 | 70098-001       | FABRICATION, BRACKET, BLOWER, AIR CONDITIONER, FM12R & FM16R            | 1  | 1  | 1  | 1  |
| 22 | 70097-002       | FABRICATION, SHROUD, EVAPORATOR, AIR CONDITIONER, FM12R, TOP            | 1  | 1  | 1  | 1  |
| 21 | 70096-001       | FABRICATION, BASE, AIR CONDITIONER, FM12R                               | 1  | 1  | 1  | 1  |
| 20 | 70091-001       | DETAIL, PLATE, DECORATIVE CONDENSER COVER, FM12R /FM16R / FM18R         | 1  | 1  | 1  | 1  |
| 19 | 70086-001       | FABRICATION, LID, ENCLOSURE, HEATER COIL, AIR CONDITIONER, FM9R         | 1  | -  | -  | 1  |
| 18 | 70085-001       | FABRICATION, ENCLOSURE, HEATER COIL, AIR CONDITIONER, FM9R              | 1  | -  | -  | 1  |
| 17 | 60211-001       | EVAPORATOR, 16000 MBTU, 12HX12.13W, 2 ROW                               | 1  | 1  | 1  | 1  |
| 16 | 60131-001       | GROMMET, 11/16" PUSH-IN LOCKING, NYLON                                  | 1  | -  | -  | 1  |
| 15 | 60062-001       | THERMAL LIMIT SWITCH, 130 DEGREE  | 1  | -  | -  | 1  |
| 14 | 60060-001       | THERMAL LIMIT SWITCH, 110 DEGREE  | 1  | -  | -  | 1  |
| 13 | 60031-002       | HEATER ELEMENT, COIL, 45"L, 8MM, 1700W, 240VAC, DBL END THRD BULKHEAD   | -  | -  | -  | 1  |
| 12 | 60031-001       | HEATER ELEMENT, COIL, 45"L, 8MM, 1700W, 120VAC, DBL END THRD BULKHEAD   | 1  | -  | -  | -  |
| 11 | 60009-001       | BLOWER, PSC, SHADED POLE, 1TDR8, 230V                                   | -  | -  | 1  | 1  |
| 10 | 50003-001       | FABRICATION, TUBING, AIR CONDITIONER, FM12R / FM16R / FM18R             | 1  | 1  | 1  | 1  |
| 9  | 2P14S3R236A-1A  | COMPRESSOR, 1PH, 60 Hz, 230V  | -  | -  | 1  | 1  |
| 8  | 2P14S3R126B-1A  | COMPRESSOR, 1PH, 60 Hz, 115V  | 1  | 1  | -  | -  |
| 7  | 20015-001       | ASSEMBLY, CONTROL BOX, SELF CONTAINED, A/C, UNIVERSAL                   | 1  | 1  | 1  | 1  |
| 6  | 1131943         | #8-18 X 1/2" HWH #3 PT SELF DRILLING SCREW, 410 SS                      | 20 | 16 | 16 | 20 |
| 5  | 0172789         | 5/16" X 1.13" FENDER WASHER, 18-8 SS                                    | 3  | 3  | 3  | 3  |
| 4  | 74113           | 3/8" DIA. SHOULDER SCREW, HEX HEAD, 1-1/4" L X 5/16"-18 THREAD, 18-8 SS | 3  | 3  | 3  | 3  |
| 3  | 72396           | #8-32 x 3/8" PHMS 18-8 SS   | 4  | -  | -  | 4  |
| 2  | 70861           | 5/16-18 NYLOCK NUT, 18-8 SS   | 3  | 3  | 3  | 3  |
| 1  | 41424           | RIVET 3/16" DIA .062-.125" GRIP RANGE, SSB62S STAINLESS                 | 21 | 21 | 21 | 21 |

| ITEM NO. | PART NUMBER | DESCRIPTION | 20022-012/QTY. | 20022-002/QTY. | 20022-102/QTY. | 20022-112/QTY. |
|----------|-------------|-------------|----------------|----------------|----------------|----------------|
|----------|-------------|-------------|----------------|----------------|----------------|----------------|

**FLAGSHIP MARINE, INC. BILL OF MATERIALS**

4. NO DEVIATION FROM THIS DESIGN WILL BE ACCEPTED WITHOUT THE PRIOR WRITTEN CONSENT OF FLAGSHIP MARINE, INC. (NINGUNA DESVIACION SE PERMITERA SIN AUTORIZACION ESCRITA PREVIA DE FLAGSHIP MARINE, INC.)

3. NO SHARP EDGES PERMITTED.

2. PREFERRED LIMITS AND FITS PER ANSI B4.1 (INCHES).

1. DIMENSIONING & TOLERANCING PER ASME Y14.5M.

NOTES:

**Flagship Marine**  
CORPORATION  
EST. 1982

**FLAGSHIP MARINE, INC.**  
2427 SE DIXIE HIGHWAY  
STUART | FLORIDA | 34996 | USA  
(772) 283-1609 | (800) 316-6426  
FAX (772) 283-4611

**PROPRIETARY AND CONFIDENTIAL**

THIS DOCUMENT CONTAINS INFORMATION PROPRIETARY TO FLAGSHIP MARINE, INC. NO PART MAY BE REPRODUCED, USED IN ANY FORM, OR STORED ELECTRONICALLY WITHOUT THE WRITTEN PERMISSION OF FLAGSHIP MARINE, INC.

| UNLESS OTHERWISE SPECIFIED:                      | NAME                 | DATE                |
|--|----------------------|---------------------|
| DIMENSIONS ARE IN INCHES                         | DRAWN                | SWC 8/2/2010        |
| TOLERANCES:                                      | CHECKED              | TCM -               |
| FRACTIONS ± 1/32                                 | ENG APPR.            | TCM -               |
| ANG: MACH ± 0°30' BEND ± 2°                      | MFG APPR.            | TCM -               |
| DECIMALS .XX ± .01                               | Q.A.                 | EAS -               |
| .XXX ± .005                                      | PERP                 | ∟ .003/IN           |
| HOLE Ø .XX ± .005                                | STRAIGHTNESS         | ∥ .005/IN           |
| INTERPRET GEOMETRIC TOLERANCING PER: ASME Y14.5M | FLATNESS             | ∕∕ .005/IN          |
| MATERIAL   | THREADS:             | EXTERNAL - CLASS 2A |
| FINISH   | INTERNAL - CLASS 2B  | ∅ U.O.S             |
| NEXT ASSY  | MACHINED SURFACES:   | ✓ U.O.S             |
| USED ON  |                      |                     |
| APPLICATION                                      | DO NOT SCALE DRAWING |                     |

TITLE: ASSEMBLY, AIR CONDITIONER FM12R, 19.75L X 12.25W X 13.50H, TOP

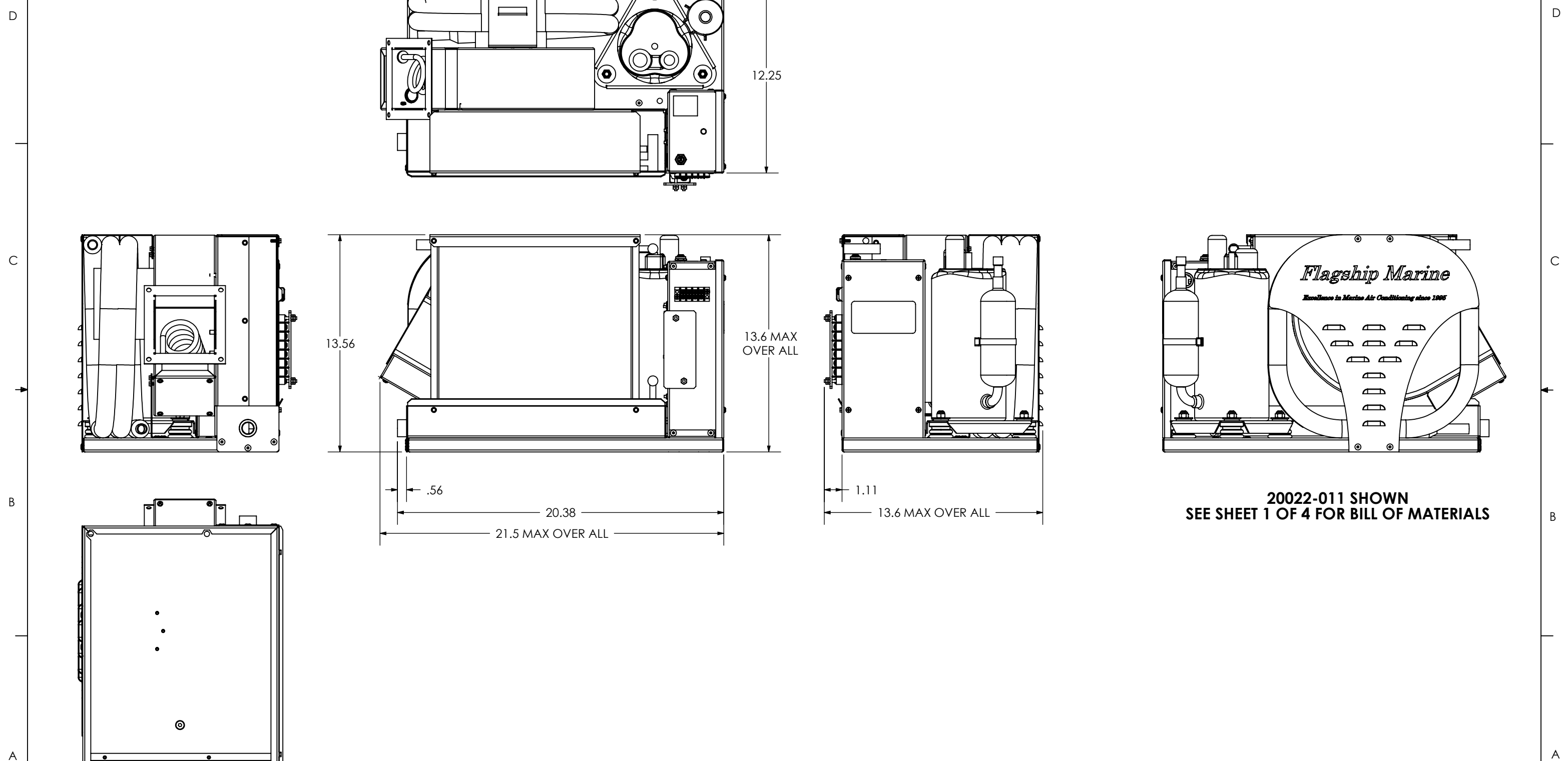
PART NO. 20022-XX2

SIZE DWG. NO. REV  
**B** FM20022 **02**

OLD PART NO. -

SCALE: 1:5 WGT: 102.38 LBS SHEET 2 OF 4

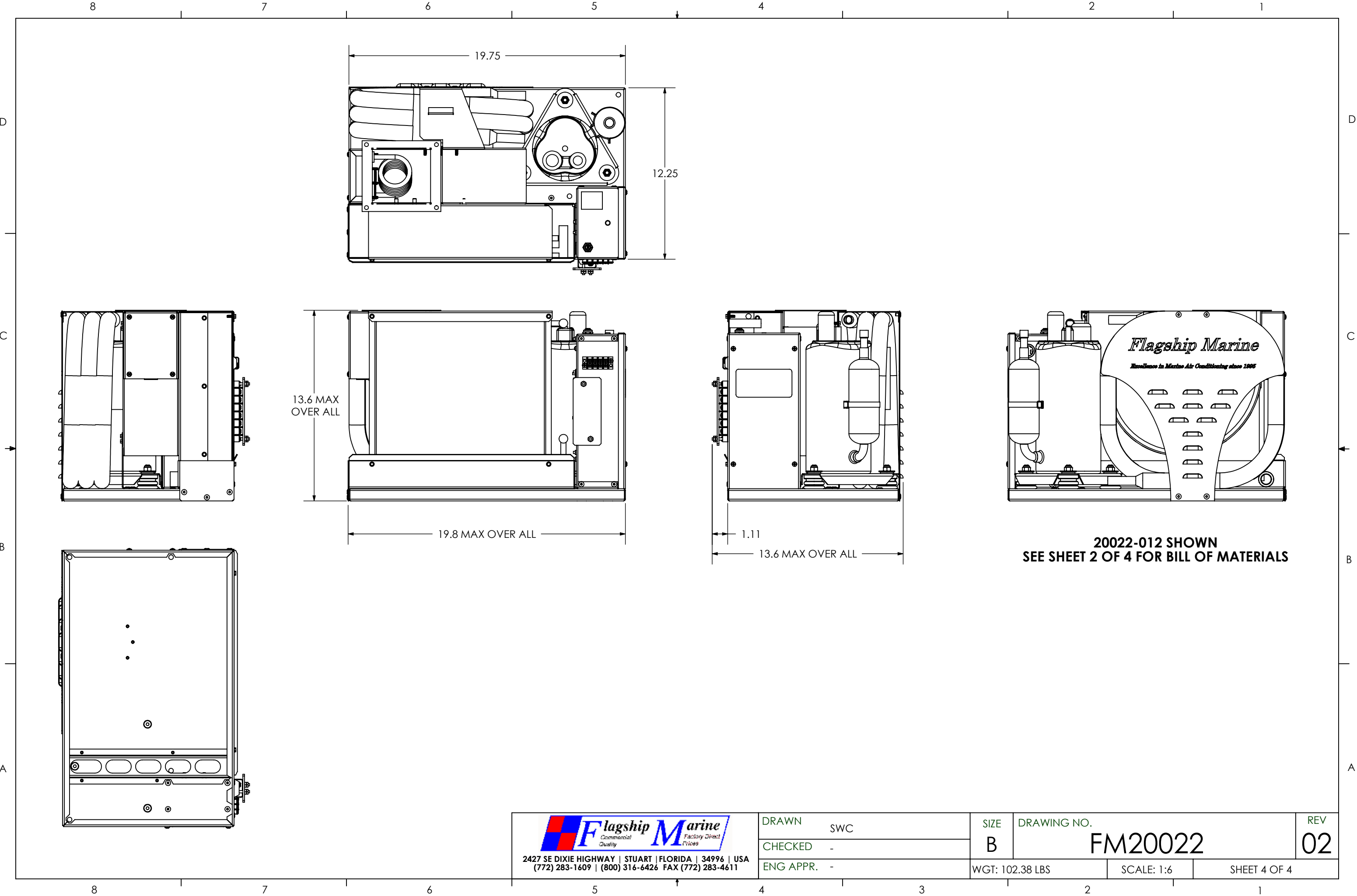
8 7 6 5 4 2 1



20022-011 SHOWN  
SEE SHEET 1 OF 4 FOR BILL OF MATERIALS

|   |             |                 |                     |              |
|---|-------------|-----------------|---------------------|--------------|
|  <p><b>Flagship Marine</b><br/>Commercial Quality Factory Direct Prices</p> <p>2427 SE DIXIE HIGHWAY   STUART   FLORIDA   34996   USA<br/>(772) 283-1609   (800) 316-6426 FAX (772) 283-4611</p> | DRAWN SWC   | SIZE B          | DRAWING NO. FM20022 | REV 02       |
|   | CHECKED -   | WGT: 102.33 LBS | SCALE: 1:6          | SHEET 3 OF 4 |
|   | ENG APPR. - |                 |                     |              |

8 7 6 5 4 3 2 1



**20022-012 SHOWN  
SEE SHEET 2 OF 4 FOR BILL OF MATERIALS**

|   |             |                 |                     |              |
|---|-------------|-----------------|---------------------|--------------|
|  <p><b>Flagship Marine</b><br/>Commercial Quality Factory Direct Prices</p> <p>2427 SE DIXIE HIGHWAY   STUART   FLORIDA   34996   USA<br/>(772) 283-1609   (800) 316-6426 FAX (772) 283-4611</p> | DRAWN SWC   | SIZE B          | DRAWING NO. FM20022 | REV 02       |
|   | CHECKED -   | WGT: 102.38 LBS | SCALE: 1:6          | SHEET 4 OF 4 |
|   | ENG APPR. - |                 |                     |              |